

ROAD INFRASTRUCTURE SAFETY MANAGEMENT



Petros Petrou
Unit C.2 - Road Safety
DG MOVE

Brussels, 4 March 2021

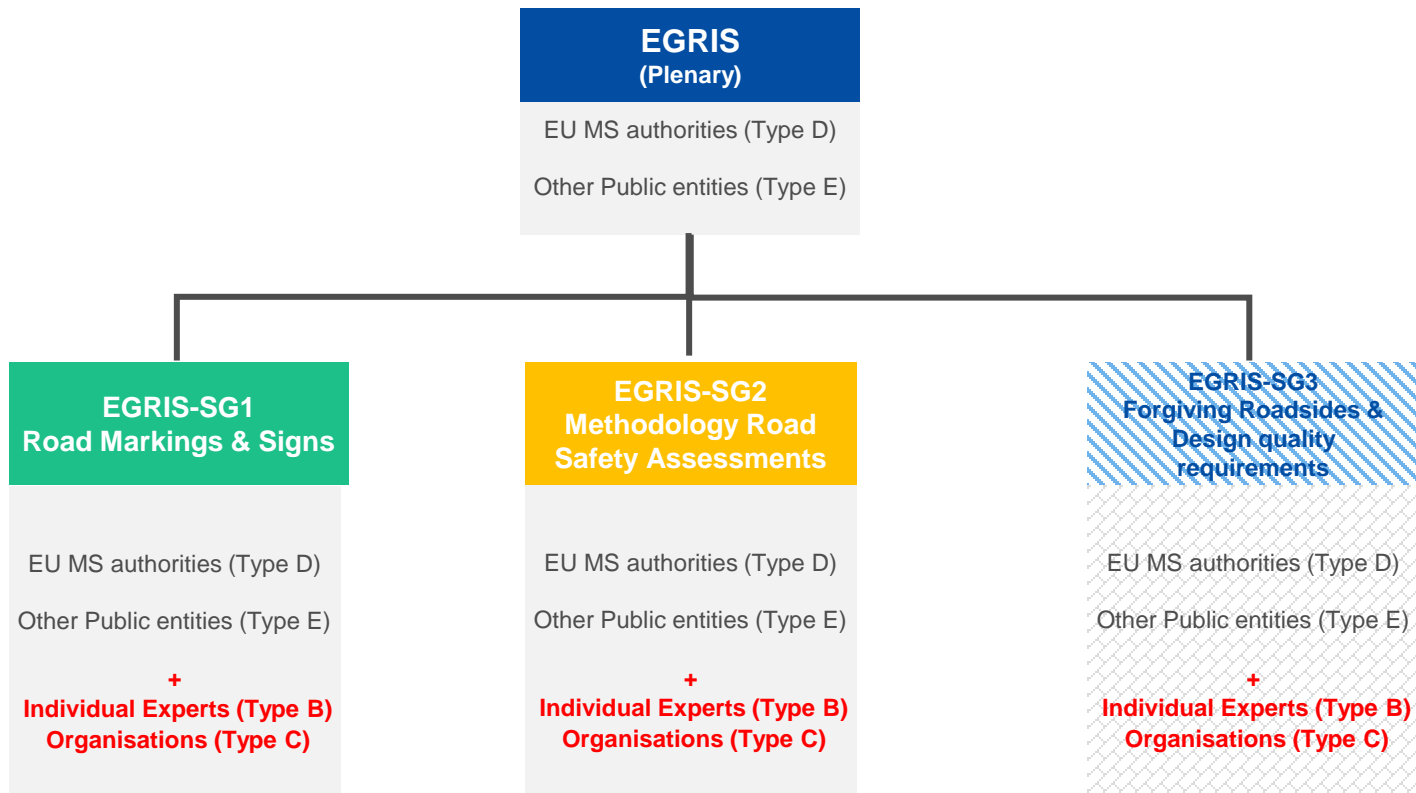
ROAD INFRASTRUCTURE SAFETY MANAGEMENT

Milestones:

- Road Markings & Signs: Assess opportunity to establish common specifications
- Guidance on Methodology on road network-wide road safety assessments & safety ratings
- Guidance on Design of « forgiving roadsides » & « self-explaining/enforcing roads »
- Guidance on Road design quality requirements for vulnerable road users

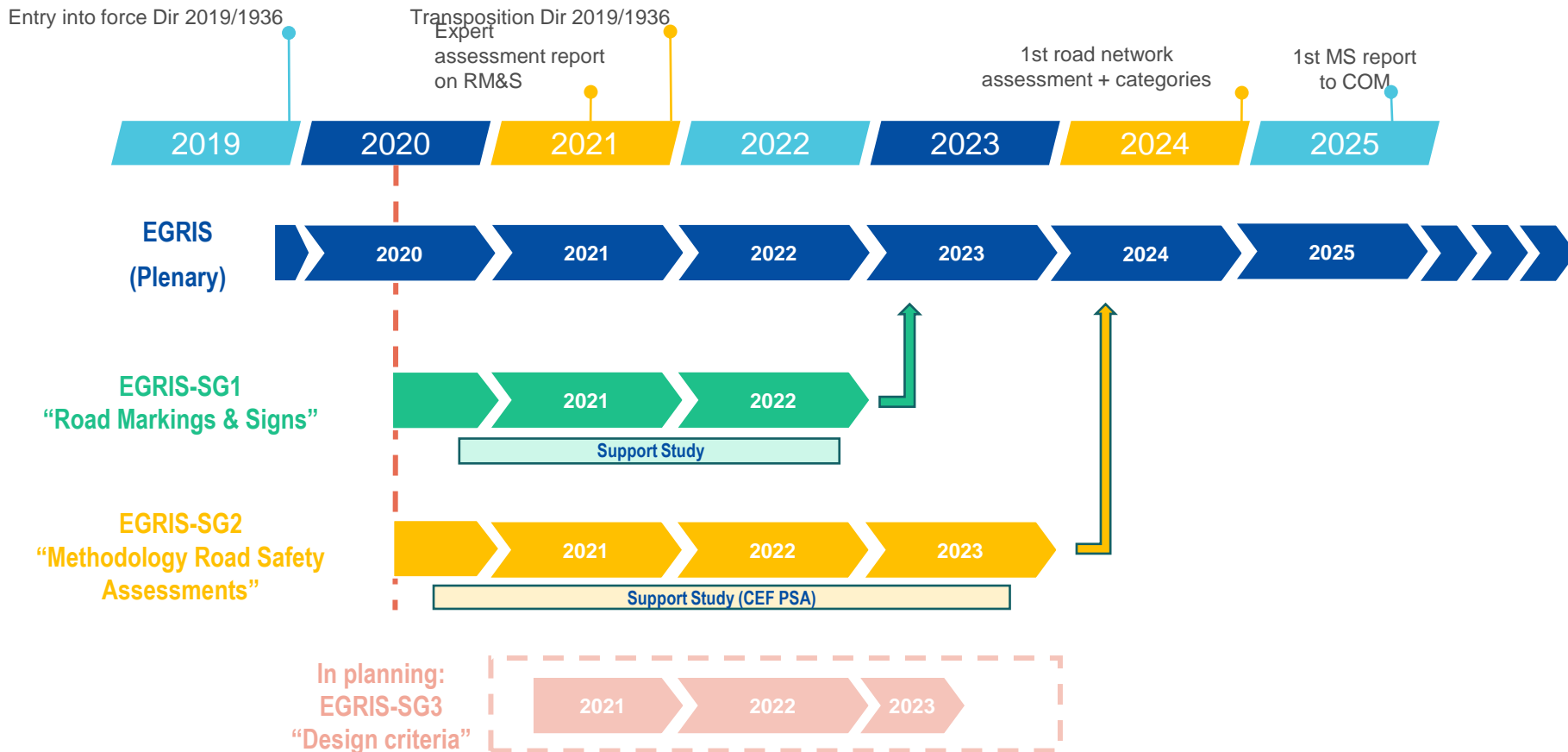


EGRIS – General working structure



Type B & Type C members are selected via specific Call for applications!

Time planning – RISM Directive





ROAD INFRASTRUCTURE SAFETY MANAGEMENT

Article 6c : Road markings and road signs

A group of experts established by the Commission shall, at the latest by June 2021, assess the opportunity to establish common specifications including different elements aiming at ensuring the operational use of road markings and road signs in order to foster the effective readability and detectability of road markings and road signs for human drivers and automated driver assistance systems.

The assessment shall take into consideration in particular the following elements:

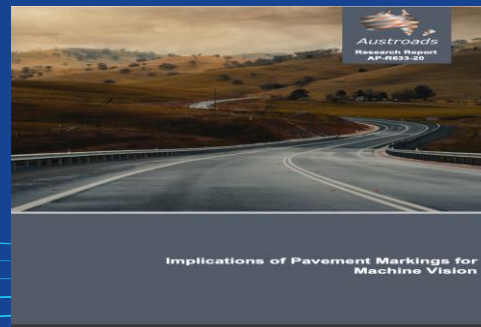
- (a) the interaction between various driver assistance technologies and infrastructure;
- (b) the effect of the weather and atmospheric phenomena as well as traffic on road markings and road signs present on the Union territory;

ROAD INFRASTRUCTURE SAFETY MANAGEMENT

Article 6c : Road markings and road signs (continued)

c) the type and frequency of maintenance efforts necessary for various technologies, including an estimate of costs.

Taking into account the assessment Commission may adopt implementing acts to establish common specifications.





ROAD INFRASTRUCTURE SAFETY MANAGEMENT

Why are road signs and road markings important?

- The importance of traffic signs and road markings on roads are greatly underestimated by many while their presence is taken for granted by drivers of all ages.
- Without road signs and road markings, would we still be able to make our driving decisions confidently?
- Keeping traffic signs and road markings in visible and understandable condition is vital for road safety.
- Importance of road signs and road markings – especially at night-time and bad weather conditions.



ROAD INFRASTRUCTURE SAFETY MANAGEMENT

Road Markings & Road Signs

How we see things...

- Infrastructure is a key pillar of the Safe System approach
- Philosophy:

Making things better in the future – no retroactive action

- For human drivers
- For ADAS
- Driver remains fully responsible - seeking max. synergy with ADAS

- Acknowledging that budgets are limited
- Harmonise approaches



@Transport_EU

Mobility and
Transport

CONNECTING
EUROPE



ROAD INFRASTRUCTURE SAFETY MANAGEMENT

Article 5: Network-wide road safety assessment

- Member States shall ensure that the first network-wide road safety assessment is carried out by 2024 at the latest
- Network-wide road safety assessments shall evaluate accident and impact severity risk, based on:
 - (a) primarily, a visual examination, either on site or by electronic means, of the design characteristics of the road (in-built safety); and
 - (b) an analysis of sections of the road network which have been in operation for more than three years and upon which a large number of serious accidents in proportion to the traffic flow have occurred
- On the basis of the results of the assessment Member States shall classify all sections of the road network in no fewer than three categories according to their level of safety



ROAD INFRASTRUCTURE SAFETY MANAGEMENT

Why network-wide road safety assessment is important?

Multiple reasons dictate the implementation of network-wide road safety assessment methods, as these methods can:

- provide the wide picture about the entire road network safety level,
- combine the advantages of both reactive (accident analysis) and proactive (in-built safety) assessments
- assist more efficient allocation of resources for road infrastructure safety improvements
- motivate stakeholders to initiate further actions for road safety
- inform road users on the most/least safe routes



Examples of road safety risks and possible countermeasures



Thank you



© European Union 2020

Unless otherwise noted the reuse of this presentation is authorised under the [CC BY 4.0](https://creativecommons.org/licenses/by/4.0/) license. For any use or reproduction of elements that are not owned by the EU, permission may need to be sought directly from the respective right holders.

Slide xx: [element concerned](#), source: [e.g. Fotolia.com](#); Slide xx: [element concerned](#), source: [e.g. iStock.com](#)